



**LANSING**  
RAILING SYSTEMS

# **RAILING** and **FENCING**





## Providing quality building materials with exceptional service and trusted value.

Since 1955, Lansing Building Products has provided the finest exterior building materials available. Our rail and fence product line is no exception. Virtually maintenance-free and warranted for a lifetime, our products will add beauty to your home while giving you more time to enjoy your outdoor living space.

### Table of Contents

Colors and Powder Coating .....	1
Summit II Vinyl Railing .....	2-3
Grandview II Vinyl Railing .....	4-5
Premier II Vinyl Railing .....	6-7
Classic II Vinyl Railing .....	8-9
Pinnacle II Vinyl Railing .....	10-11
Hidden Screw Rail Mounts .....	12
Gates & Hardware .....	13
Post Mounts .....	14
Classic Vinyl Posts .....	15
"A" Series Decorative Vinyl Posts .....	16
Column Clad Vinyl Post Wraps .....	17
"B" Series Aluminum Posts .....	18
ADA Continuous Handrail .....	19
Westbury® Aluminum Railing .....	20-21
Fencing .....	22-25

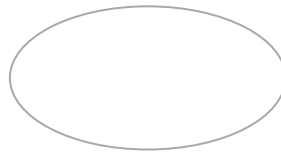




# COLORS

## Vinyl Colors

Vinyl Products are available in three colors. Our Mocha color is available for **select** products. Please see individual product pages for availability.



White



Tan

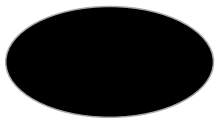


Mocha

## Aluminum Colors

Aluminum Products are offered in 12 standard AAMA 2604 colors. Custom colors and AAMA 2605 colors are available by special order.

Colors shown are a close approximation of the true color. Please consult actual samples for accurate powder coating colors.



Satin Black



Black Fine Texture



Ninety Bronze



Bronze Fine Texture



Gloss Beige



Gloss White



White Fine Texture



Brown Fine Texture



Speckled Walnut



Sandy Shore



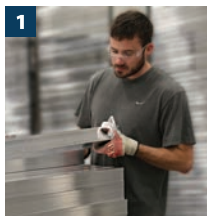
Chocolate



Grey Fine Texture

## Exclusive Powder Coating Process

Aluminum Powder Coating offers an uncompromising quality created by state-of-the-art technology. Our system provides the highest quality powder coating on the market with a lifetime limited warranty giving you peace of mind in your investment.



**1** The raw premium-grade aluminum is inspected to be free of blemishes and is not exposed to the outdoor elements.



**2** The product enters a heated acidic cleaning stage to remove extrusion debris and fabrication oils.



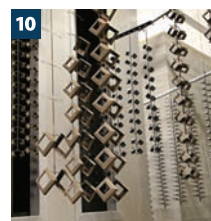
**3-6** **Clean:** City water rinse  
**Cleaner:** Recycling reverse osmosis water rinse  
**Cleanest:** Pure reverse osmosis water rinse  
**Sealer:** Dried-in-place aluminum sealer



**7-8** A 200 MPH air blast removes water drops from the pre-treated aluminum. A convection oven completes the dry-off process.



**9** Powder is applied with 18 automated and 2 manual spray guns. Compressed process air is dried to -35°F Dew Point for superior adhesion.



**10** The powder coating is then bonded and adhered to the aluminum substrate in a 400 degree cure stage.

# SUMMIT II

vinyl railing





# Summit II Railing



## Standard Baluster

1-3/8" x 1-3/8" Square Vinyl  
3-7/8" Baluster Spacing

White

Tan

Mocha



## "A" Series Baluster

1-3/8" x 1-3/8" Decorative Vinyl  
3-7/8" Baluster Spacing  
42" Balusters are Aluminum Reinforced

White

Tan



## "B" Series Baluster

3/4" Round Aluminum  
3-7/8" Baluster Spacing  
See Page 1 for Baluster Colors

White

Tan

Mocha

CCRR-0147 (Complies with IBC, IRC, FBC). Applies to only Standard Baluster sections up to 8' x 42"T.

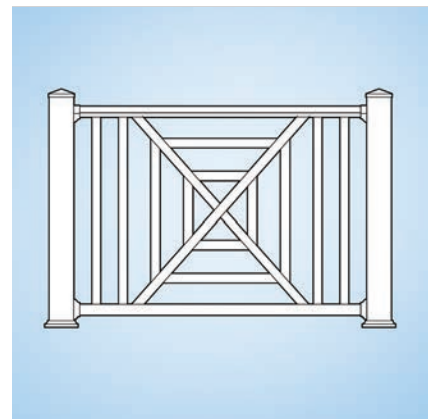
Section Type	Length										Height		Baluster Style		
	4'	5'	6'	7'	8'	9'	10'	12'	14'	16'	36"	42"	Std	A	B
Straight	•	•	•	•	•	•	•				•	•	•	•	•
Stair	•	•	•	•	•	•	•				•	•	•	•	•
Crossover - Straight								•	•	•	•	•	•	•	•
Crossover - Stair											Not Available	Not Available	Not Available	Not Available	Not Available
Single Chippendale - Straight	•	•	•	•	•	•	•				•	•	•		
Double Chippendale - Straight					•	•	•				•	•	•		
Chippendale - Stair											Not Available	Not Available	Not Available	Not Available	Not Available
Single Caribbean - Straight	•	•	•	•	•	•	•				•		•		
Double Caribbean - Straight					•	•	•				•		•		
Caribbean - Stair											Not Available	Not Available	Not Available	Not Available	Not Available



## Crossover



## Single Chippendale



## Single Caribbean

Note: Railing Support included with all 5' - 10' sections. Crossover Sections (10' - 16') include two Railing Supports.



# GRANDVIEW II

vinyl railing





# Grandview II Railing



**Standard Baluster**  
1-3/8" x 1-3/8" Square Vinyl  
3-1/2" Baluster Spacing

White Tan Mocha



**"A" Series Baluster**  
1-3/8" x 1-3/8" Decorative Vinyl  
3-1/2" Baluster Spacing  
42" Balusters are Aluminum Reinforced

White Tan

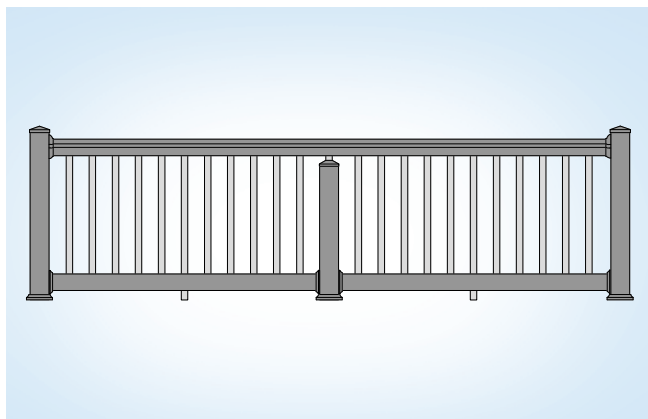


**"B" Series Baluster**  
3/4" Round Aluminum  
3-7/8" Baluster Spacing  
See Page 1 for Baluster Colors

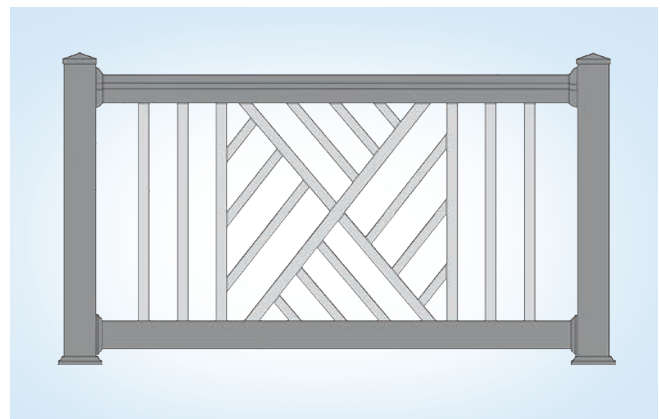
White Tan Mocha

ICC-ES ESR-1324 Applies to only Standard Baluster sections up to 8' x 42" T

Section Type	Length											Height		Baluster Style		
	4'	5'	6'	7'	8'	9'	10'	12'	14'	16'		36"	42"	Std	A	B
Straight	•	•	•	•	•	•	•					•	•	•	•	•
Stair	•	•	•	•	•	•	•					•	•	•	•	•
Crossover - Straight								•	•	•		•	•	•	•	•
Crossover - Stair					Not Available							Not Available		Not Available		
Single Chippendale - Straight	•	•	•	•	•	•	•					•	•	•		
Double Chippendale - Straight				•	•	•	•					•	•	•		
Chippendale - Stair					Not Available							Not Available		Not Available		



**Crossover**



**Single Chippendale**

Note: Railing Support included with all 8' - 10' sections. 16' Crossover Sections include two Railing Supports.

# PREMIER II

vinyl railing





# Premier II Railing



**Standard Baluster**  
 7/8" x 1-1/2" Rectangular Vinyl  
 2-7/8" Baluster Spacing

- White
- Tan



**"A" Series Baluster**  
 7/8" x 1-1/2" Decorative Vinyl  
 2-7/8" Baluster Spacing  
 42" Balusters are Aluminum Reinforced

- White
- Tan



**"B" Series Baluster**  
 3/4" Round Aluminum  
 3-7/8" Baluster Spacing  
 See Page 1 for Baluster Colors

- White
- Tan

ICC-ES ESR-1324 Applies to only Standard Baluster sections up to 7' x 42" T

Section Type	Length											Height		Baluster Style		
	4'	5'	6'	7'	8'	9'	10'	12'	14'	16'		36"	42"	Std	A	B
Straight	•	•	•	•	•	•	•					•	•	•	•	•
Stair	•	•	•	•	•	•	•					•	•	•	•	•
Crossover - Straight							•	•	•	•		•	•	•	•	•
Crossover - Stair					Not Available							Not Available		Not Available		



**Crossover**

Note: Railing Support included with all 7' - 10' sections. 14' and 16' Crossover Sections include two Railing Supports.



# CLASSIC II

vinyl railing





# Classic II Railing



**Standard Baluster**  
7/8" x 1-1/2" Rectangular Vinyl  
2-7/8" Baluster Spacing

White Tan



**"A" Series Baluster**  
7/8" x 1-1/2" Decorative Vinyl  
2-7/8" Baluster Spacing  
42" Balusters are Aluminum Reinforced

White Tan



**"B" Series Baluster**  
3/4" Round Aluminum  
3-7/8" Baluster Spacing  
See Page 1 for Baluster Colors

White Tan

ICC-ES Legacy Report NO. 21-42 Applies to only Standard Baluster sections up to 8' x 42" T

Section Type	Length										Height		Baluster Style		
	4'	5'	6'	7'	8'	9'	10'	12'	14'	16'	36"	42"	Std	A	B
Straight	•	•	•	•	•	•	•				•	•	•	•	•
Stair	•	•	•	•	•	•	•				•	•	•	•	•
Crossover - Straight								•	•	•	•	•	•	•	•
Crossover - Stair					Not Available						Not Available		Not Available		
Single Chippendale - Straight	•	•	•	•	•	•	•				•	•	•		
Double Chippendale - Straight				•	•	•	•				•	•	•		
Chippendale - Stair					Not Available						Not Available		Not Available		



**Crossover**



**Double Chippendale**

Note: Railing Support included with all 8' - 10' sections. 16' Crossover Sections include two Railing Supports.



# PINNACLE II

vinyl railing





# Pinnacle II Railing



## Standard Baluster

1-3/8" x 1-3/8" Square Vinyl  
3-1/2" Baluster Spacing

White

Tan



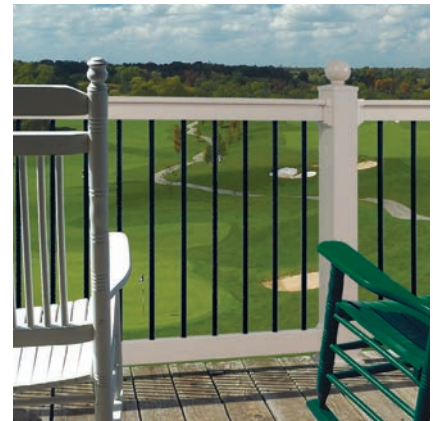
## "A" Series Baluster

1-3/8" x 1-3/8" Decorative Vinyl  
3-1/2" Baluster Spacing  
42" Balusters are Aluminum Reinforced

White

Tan

No testing available



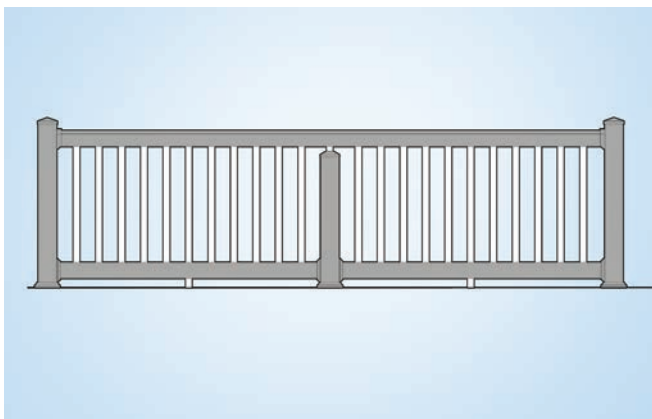
## "B" Series Baluster

3/4" Round Aluminum  
3-7/8" Baluster Spacing  
See Page 1 for Baluster Colors

White

Tan

Section Type	Length										Height		Baluster Style		
	4'	5'	6'	7'	8'	9'	10'	12'	14'	16'	36"	42"	Std	A	B
Straight	•	•	•	•	•	•	•				•	•	•	•	•
Stair	•	•	•	•	•	•	•	•			•	•	•	•	•
Crossover - Straight								•	•	•	•	•	•	•	•
Crossover - Stair					Not Available						Not Available		Not Available		
Single Chippendale - Straight	•	•	•	•	•	•	•				•	•	•		
Double Chippendale - Straight				•	•	•	•				•	•	•		
Chippendale - Stair					Not Available						Not Available		Not Available		



Crossover



Double Chippendale

Note: Railing Support included with all 8' - 10' sections. 16' Crossover Sections include two Railing Supports.



# HIDDEN SCREW RAIL MOUNTS

## Standard Wall Mounts:

1-4 pack is included inside each boxed railing section.

A 4 pack contains (2) top mounts, (2) bottom mounts, and screws.

### Classic II

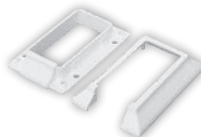


Top/Bottom Rail Mount

### Grandview II



Top Rail Mount



Bottom Rail Mount

### Summit II Premier II



Top Rail Mount



Bottom Rail Mount

### Pinnacle II



Top Rail Mount



Bottom Rail Mount

## Standard Stair Mounts:

1-4 pack is included inside each boxed stair railing section.

A 4 pack contains (2) top mounts, (2) bottom mounts, and screws.

For Stair Racking information visit [lansingbp.com/product/railing](http://lansingbp.com/product/railing)



Top/Bottom Stair Mount



Top Stair Mount



Bottom Stair Mount



Top Stair Mount (factory pre-cut)



Bottom Stair/Angle Mount



Top Stair Mount



Bottom Stair Mount

## Optional Specialty Mounts:

These mounts are not included with boxed sections.

A 4 pack contains (2) top mounts, (2) bottom mounts, and screws.



Top/Bottom Angle Mount



Top/Bottom Angle Mount



Top Stair/Angle Mount (uncut)



Bottom Stair/Angle Mount



Top/Bottom Angle Mount



Top 45° Mount (factory pre-cut)



Top 45° Mount (factory pre-cut)



Bottom 45° Mount (factory pre-cut)



Bottom 45° Mount (factory pre-cut)

## 8" and 10" Round Smooth Column Adapters



Not Available in 6"

## 6" and 8" Round Fluted Column Adapters



Not Available in 10"

## Rail Supports





# GATES & HARDWARE

**Classic II Gate**



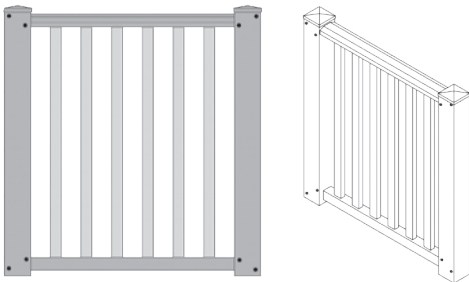
**Grandview II Gate**



**Summit II Gate**



**Premier II Gate**



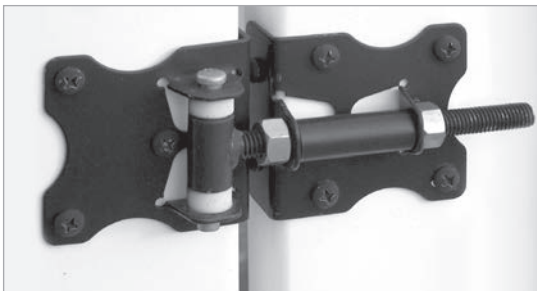
**Pinnacle II Gate**



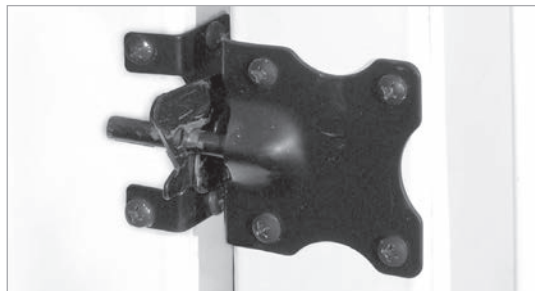
Matching gates available for each style of railing • Aluminum Reinforced Frame  
Available in 36"W and 48"W openings • Special Width Gates Available Upon Request

Baluster Style	Gate Size (width x height)			
	36" x 36"	48" x 36"	36" x 42"	48" x 42"
Standard Baluster	•	•	•	•
"A" Series Baluster	•	•	•	•
"B" Series Baluster	•	•	•	•

**Residential Hinge**



**Residential Latch**



White

Tan

Mocha

Black

Mocha is available for **select** products.  
Please see individual product pages for availability.

# POST MOUNTS

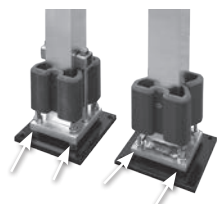
## 4" Residential Adjustable Aluminum Post Mounts

Requires 4" (.160" Wall)  
Post Sleeve.

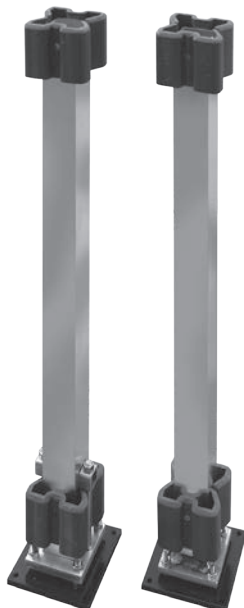


Top View

Powder coated base plates  
resist corrosion and  
ACQ wood treatment.

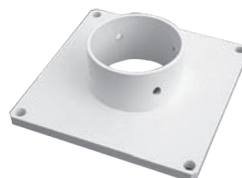


Angle Adjustment  
Leveling Bolts

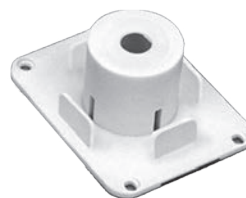


Heavy Duty      Standard

## Top and Bottom Post Mounts



5" Top & Bottom  
Hurricane Mount Set  
(Included with all 5"  
Square Support Posts)



Optional 4" Top  
and Bottom Post  
Mount Plates



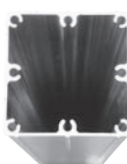
## 4" IBC and IRC Post Mounts

### IBC (Heavy Duty) Post Mounts:

- IBC Approved
- 3.62" Tube
- .060" Wall
- 1/2" x 5 1/2" square plate with 8 fasteners
- Shims and leveling bolts included



Top View



43" IBC  
Post Mount  
Available in  
37", 43", 47"  
& 53" lengths

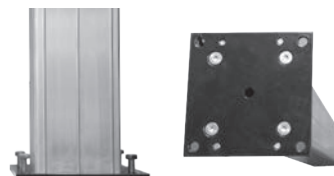


37" IRC  
Post Mount  
Available in  
37", 43", 47"  
& 53" lengths

Requires 4" (.135" Wall) Post Sleeve  
Note: 5" and 6" Post Mounts available.  
Contact Customer Service for information.

### IRC (Standard) Post Mounts:

- IRC Approved
- 3.62" Tube
- .060" Wall
- 1/4" x 5 1/2" square plate with 4 fasteners
- Shims and leveling bolts included





# CLASSIC VINYL POSTS

## Posts

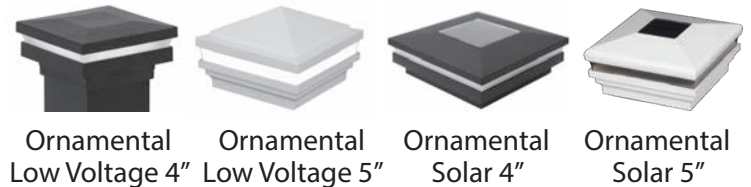


## Caps



## Magena Star®

Magena Star Ornamental Low Voltage and Solar Lights. Visit [magenastar.com](http://magenastar.com) for more information and to see additional styles.



## Flairs

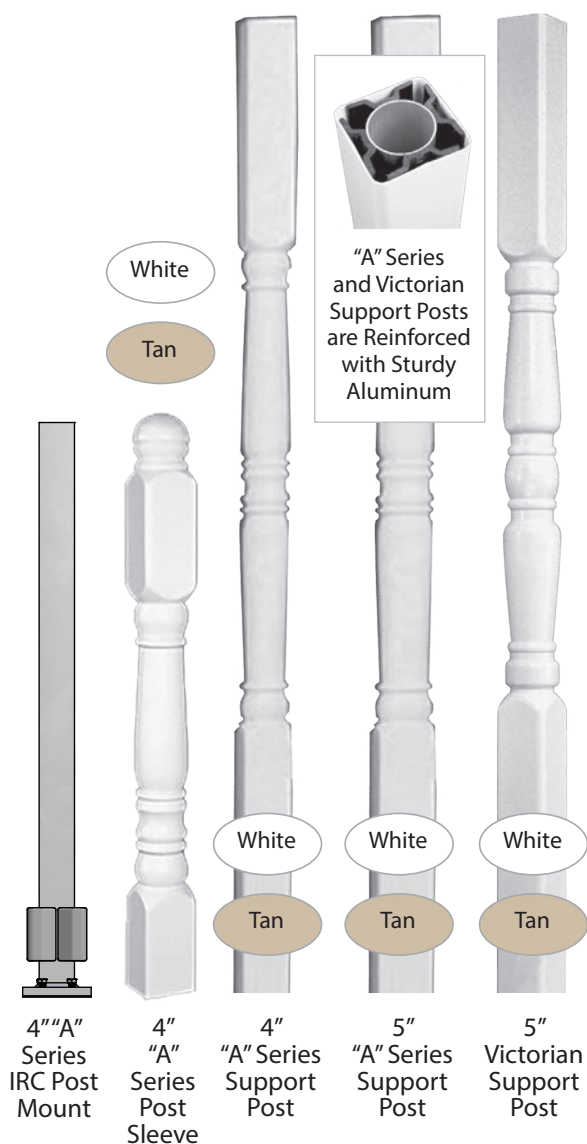


## Specifications

	4" Post Sleeve	5" Post Sleeve	5" Support Post	6" Post Sleeve
Heights	38", 44", 48", 54" 8', 9', 10'	38", 44", 48", 54" 8', 9', 10'	8', 9', 10'	38", 44", 48", 54" 10'
Load Capacity	Non-Load Bearing w/o Wood Post	Non-Load Bearing w/o Wood Post	8' = 12,000 lb.	Non-Load Bearing w/o Wood Post

# "A" SERIES DECORATIVE VINYL POSTS

## Posts

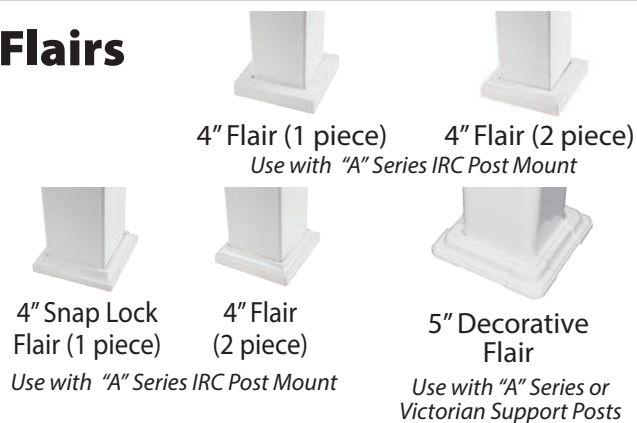


## Cap



"A" Series Decorative Post Caps Are Easily Attached with Vinyl Adhesive  
Cap Is Included with Post

## Flairs



## Support Post Mounts



## Specifications

	4" "A" Series Post Sleeve	4" "A" Series Support Post	5" "A" Series Support Post	5" Victorian Support Post
Heights	38", 44", 48", 52"	9'	9', 10'	9'
Load Capacity	Non-Load Bearing w/o Aluminum Post Mount	3,900 lb.	9' = 7,520 lb.	9' = 7,520 lb.



# COLUMN CLAD VINYL POST WRAPS

## Styles

The Wood Post Supplies Load Capacity



Smooth



Ratchets to  
Lock Together



Wraps Around  
the Wood Post –  
No Screws Needed

## Cap



Column Clad Cap  
4", 6"

## Flair



Column Clad Flair (4 piece)  
4", 6"

## Specifications

	4" Smooth Column Clad	6" Smooth Column Clad
Heights	8', 10'	8', 10'
Load Capacity	Non-Load Bearing w/o Wood Post	Non-Load Bearing w/o Wood Post

# "B" SERIES ALUMINUM POSTS

See Page 1 for Color Options

## Posts



4" Post Sleeve  
(.065" wall)



4" Post w/Plate  
(.090" wall)



6" Post w/Plate  
(.090" wall)

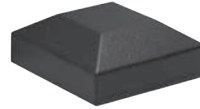


4" Support Post  
(.090" wall)



6" Support Post  
(.090" wall)

## Caps



Flat Cap  
4" & 6"



Ball Cap  
4"

## Flair



Post Flair (2 piece)  
4" & 6"

## Tie Down Bracket



Tie Down Bracket  
with Cover  
(Set of 2)

Installation  
Instructions  
Require 2 Sets per  
Support Post

## Specifications

	4" "B" Series Post Sleeve	4" "B" Series Post w/Plate	6" "B" Series Post w/Plate	4" "B" Series Support Post	6" "B" Series Support Post
Heights	38", 44", 48", 54"	38", 44", 48", 54"	38", 44", 48", 54"	8', 9', 10'	8', 9', 10'
ASD Capacity* (Allowable Axial Loads)	Non-Load Bearing w/o Wood Post	Non-Load Bearing	Non-Load Bearing	8' = 13,531 lb. 9' = 12,751 lb. 10' = 11,970 lb.	8' = 16,543 lb. 9' = 16,543 lb. 10' = 16,543 lb.

\*Weight values are Actual Calculated Allowable Loads

For B Series Aluminum Post pricing, check with your DSI Customer Service Rep.

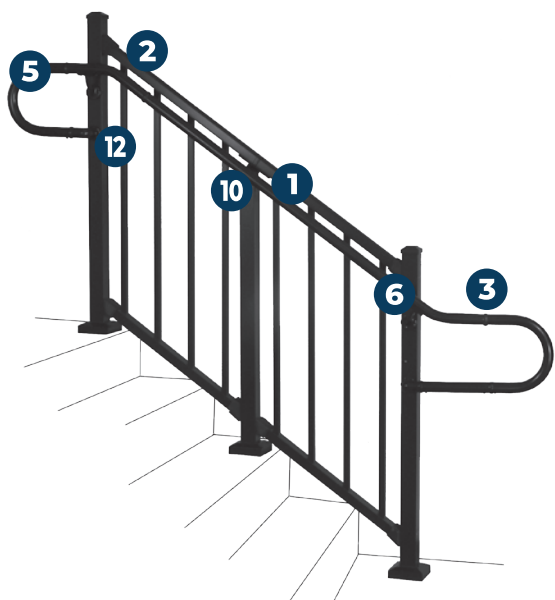


# ADA CONTINUOUS HANDRAIL

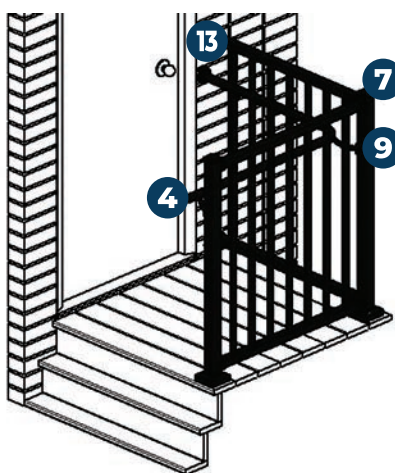
ADA Continuous Handrail is designed to assist individuals with accessibility and mobility concerns. This system offers versatile components and accessories, providing the perfect safety solution for stairways, ramps, and decks. ADA Continuous Handrail is easy to install on any surface and is compatible with new or existing railing systems. Available in 12 colors (shown on page 1).



## Stair Application



## Deck Application



Inside Corner Mount  
& 90° Elbow Detail



Extended Wall Mount Detail



90° Welded Elbow Detail



1-3/8" Handrail  
(8', 10' & 16')



Internal Connector  
with Collar Ring



Collar Rings  
(to cover splice)



Internal  
End Cap



180° Elbow



Adjustable Elbow  
with two Collar Rings



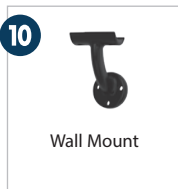
90° Elbow



90° Welded  
Elbow



Inside Corner Mount  
(attaches to post)



Wall Mount



Extended  
Wall Mount



Wall Return  
with Collar Ring



Wall-End  
Mount





*Transforming the Outdoor Living Experience™*

Beauty meets strength. Elegance meets distinction. Masterpiece meets innovative engineering. Westbury® Aluminum Railing is designed with these essential elements in mind.

With a variety of designs, colors, and textures, you have the power to decide what fits your home. Whether you are adding railing to the front of your home or to the deck in the back, Westbury® Aluminum Railing can turn your home into a welcoming retreat.





## Tuscany (C10)

Westbury® Tuscany Railing creates a welcoming look for your home featuring a classic 2-rail design. This design is accented with a stylish top rail and either square (Style C10) or round (Style C101) balusters.

- Available in 4', 5', 6', 7', & 8' sections
- Available in 36" & 42" heights
- Stair Sections available in 4', 5', 6', 7', & 8' lengths
- Adjustable Gates available in 36", 48", & 60" width openings



## VertiCable® (C80)

It's your view – don't hide it. With contemporary vertical cables and balusters, VertiCable® provides architectural style with a virtually unobstructed view. VertiCable® sections are factory assembled, tensioned, and shipped on pallets ready for quick installation.

- Available in 4', 5', 6', 7', & 8' sections
- Available in 36" & 42" heights (7' & 8' in 36" height only)
- Stair Sections available in 4', 5', & 6' lengths
- Adjustable Gates available in 36", 48", & 60" width openings



## ScreenRail

Expand your living area and enjoy the outdoors with Westbury® ScreenRail. ScreenRail is a premium system designed to keep you outdoors without being "bugged" by insects.

- Structural railing system
- Available heavy duty kick panel helps prevent screen damage from feet and pets
- Easy to assemble 4', 6', & 8' sections
- Assembled universal door (right or left hand hinge) with heavy duty frame (Inswing & Outswing offered)
- Durable flat spline secures screen
- Designed to allow you to choose the screen type that best meets your needs



These Westbury® products are available in the 12 Standard Certified PCI 4000 and Verified AAMA 2604 Compliant Colors shown on page 1.

# VINYL PRIVACY FENCE

## Interlock 2 Panel

Private moments and the solitude that you deserve are exactly what you can expect with a Lansing Privacy fence system. Accent your Privacy fence with a beautiful spindle or lattice top and add elegance to your environment at the same time.

### Interlock 2 Panel With Flat Caps

- Heights: 48", 60", 72", 84", 96"
- Width: 96" Centers
- 10" Standard Racking
- Post Size: 5" x 5" Vinyl Post
- Flat Caps Standard  
(Ball, Gothic, & Trim Caps Optional)
- Side Channels for Posts Included



### Interlock 2 Panel With Spindle Topper

- Heights: 60", 72", 84"
- Width: 96" Centers
- 10" Standard Racking
- Post Size: 5" x 5" Vinyl Post
- Flat Caps Standard  
(Ball, Gothic, & Trim Caps Optional)
- Side Channels for Posts Included



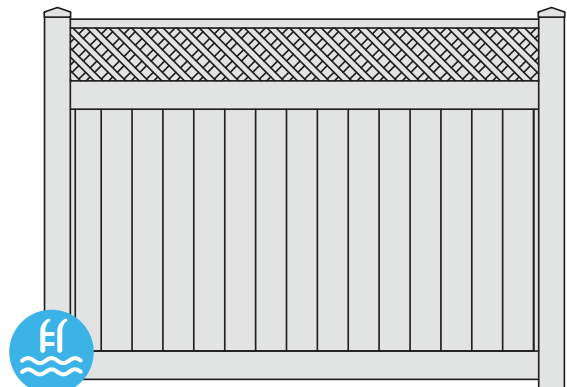
for 72" and 84" heights



I-Beam  
Reinforcement  
Prevents  
Sagging

### Interlock 2 Panel With Lattice Top

- Height: 72"
- Width: 96" Centers
- 10" Standard Racking
- Post Size: 5" x 5" Vinyl Post
- Flat Caps Standard  
(Ball, Gothic, & Trim Caps Optional)
- Side Channels for Posts Included



#### Pool Code Approved

Fence models marked with this symbol comply with ASTM F2409 and 1908 pool codes for height and spacing. Always check with your local building code authority as local codes may differ.



# VINYL YARD FENCE

## Recreational & Picket

Our Recreational & Picket fence systems are popular fences for homeowners across the country. Recreational & Picket fences are an ideal accent for any pool, patio or landscape. Our designs offer the same finished look on each side so you and your neighbor will both be happy, no matter what style you choose.

### Recreational II

- Heights: 36", 42", 50-1/2"
- Width: 96" Centers
- Post Size: 4" x 4" Vinyl Posts
- Flat Caps Standard (Ball, Gothic, & Trim Caps Optional)
- Spacing: 3-11/16"
- Aluminum Insert: Bottom Rail

White

Tan

Mocha



for 50-1/2" height

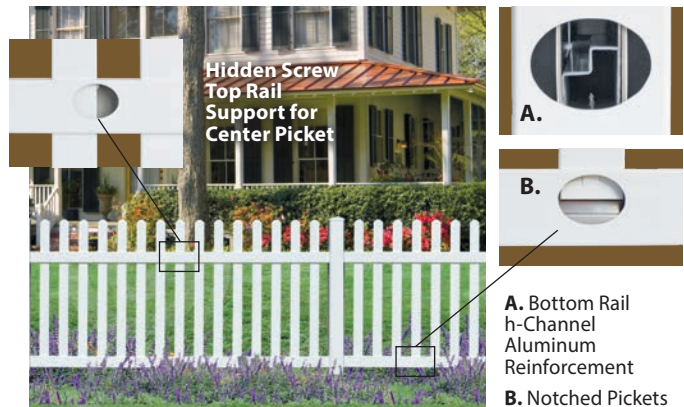
### Picket II

- Heights: 36", 42", 48"
- Width: 96" Centers
- Post Size: 4" x 4" Vinyl Posts
- Flat Caps Standard (Gothic Caps Optional)
- Spacing: 2-15/16"
- Aluminum Insert: Bottom Rail
- Matching Gates Available

White

Tan

Mocha



### Sculptured Picket II

- Heights: 36", 42", 48"
- Width: 96" Centers
- Post Size: 4" x 4" Vinyl Posts
- Flat Caps Standard (Gothic Caps Optional)
- Spacing: 2-15/16"
- Aluminum Insert: Bottom Rail
- Matching Gates Available

White

Tan

Mocha



# VINYL RAIL RANCH FENCE

## 2, 3, & 4 Rail

Hardworking and affordable, a Lansing Rail Ranch fence system is a great choice for a busy ranch or casual neighborhood. The clean lines of the fence blend beautifully with a wide range of architectural styles. Whether you are establishing a property boundary or adding charm to a country home, a Rail Ranch fence provides a traditional appearance while offering non-traditional maintenance.

### Rail Ranch Fence II

- 2-Rail Height: 36"
- 3-Rail Height: 48", 52"
- 4-Rail Height: 52"
- Width: 96" Centers
- Post Size: 5" x 5" Vinyl Posts
- Flat Caps Standard (Trim, Gothic, Ball, & Internal Caps Optional)

White

Tan

Mocha

### 2-Rail Ranch



### 3-Rail Ranch



### 4-Rail Ranch



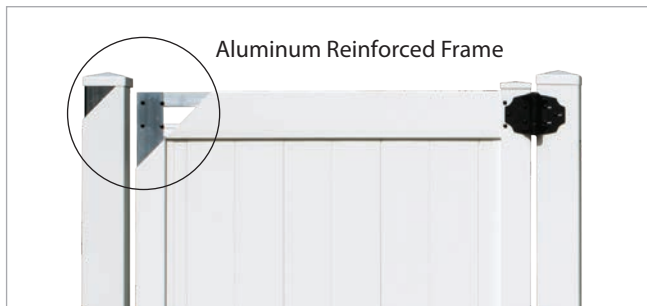


# FENCE GATES

## & Hardware

Lansing gate systems are built with structural integrity. Offering long-term solutions to traditional gates, Lansing's gate frames are aluminum reinforced frames and come factory assembled. With the use of the recommended heavy duty aluminum gate post stiffeners, Lansing's gates complete a solid fence system.

**Interlock 2 Panel Privacy Tongue and Groove**



**Recreational II**



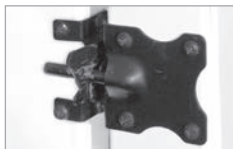
**Magna Latch**



**Lokk Latch Deluxe**



**Residential Latch**



**Tru-Close Hinge**



**Residential Hinge**

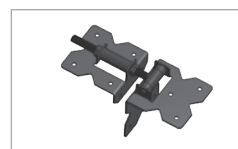


Gate Style	Single Gate Opening Widths					Double Gate Opening Widths				
	36"	42"	48"	60"	72"	72"	84"	96"	120"	144"
Interlock 2 Panel Privacy	•	•	•	•		•	•	•	•	
Interlock 2 Panel Privacy with Spindle Topper	•	•	•	•		•	•	•	•	
Interlock 2 Panel Privacy with Lattice Top	•	•	•	•		•	•	•	•	
Recreational II	•	•	•	•	•	•	•	•	•	•
Picket II	•	•	•	•	•	•	•	•	•	•
Sculptured Picket II	•	•	•	•	•	•	•	•	•	•

**Rail Ranch**



**Commercial Hinge**



**Commercial Latch**



Rail Ranch Gate Style	Single Gate Opening Widths				Double Gate Opening Widths			
	48"	72"	96"	120"	96"	144"	192"	240"
2-Rail	•	•	•	•	•	•	•	•
3-Rail	•	•	•	•	•	•	•	•
4-Rail	•	•	•	•	•	•	•	•



All vinyl railing and fence systems are covered by a Lifetime Limited Warranty\*. Vinyl products are transferable should you sell your home (external aluminum products and components are non-transferable). Vinyl products are guaranteed never to rot, peel, blister, rust or be consumed by insects. If you are looking for quality products manufactured to last, ask your contractor for Lansing Building Products.



**LANSING**  
BUILDING PRODUCTS



**LANSING**  
RAILING SYSTEMS

**Contact your local Lansing representative for more details.**  
**LansingBP.com**

Lansing Building Products reserves the right to delete or change items in its product line without notice.

\*See warranty for full details. © 2021 Lansing Building Products

Lansing Railing Systems are expressly manufactured for Lansing Building Products by DSI. All warranties, expressed and implied, are provided by DSI.

2021/01