



Railing AND Fencing



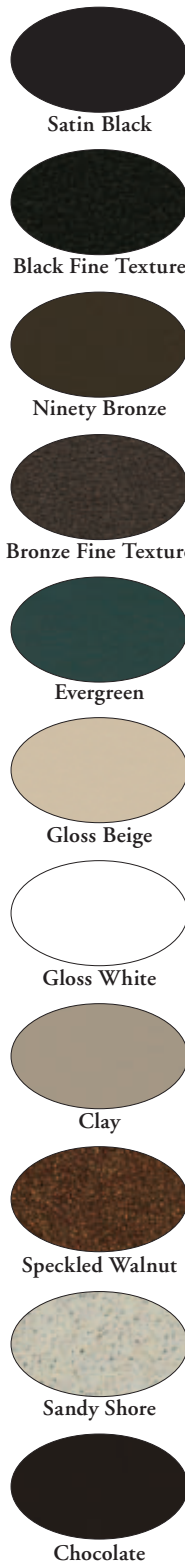


Lansing Building Products...

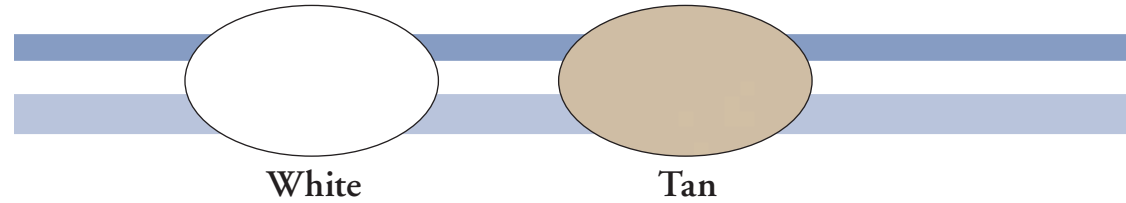
Providing quality building materials with exceptional service and trusted value.

Since 1955, Lansing Building Products has provided the finest exterior building materials available. Our rail and fence product line is no exception. Virtually maintenance-free and warranted for a lifetime, our products will add beauty to your home while giving you more time to enjoy it.





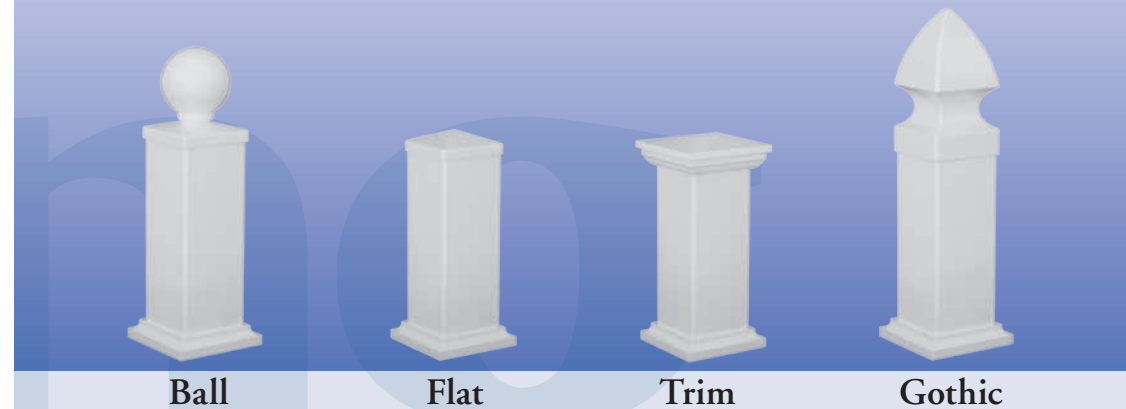
Signature Colors



Colors shown are reproduced by lithographic processes and may vary slightly from actual colors.

Lansing offers a variety of options to allow individual expression in your style. Choose from our Signature Colors, like traditional white & classic tan. Optional 3/4" round aluminum spindle colors are listed on the left. Our Ball and Gothic post caps create a bold statement, while one of our Trim caps will give your rail or fence a more simplistic feel.

Decorative Post Caps



Railing Systems

Hidden Screw Bracket System



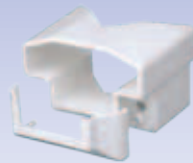
*Hidden Screw
Top Mount*



*Hidden Screw
Bottom Mount*



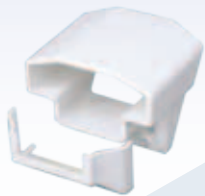
*Hidden Screw
45° Bottom Mount*



*Hidden Screw
45° Top Mount*



*Hidden Screw
Top Stair/Angle Mount - Uncut*



*Hidden Screw
Top Stair Mount - Precut*



*Hidden Screw
Top Angle Mount - Jobcut*



*Hidden Screw
Bottom Stair/Angle Mount*

The bracket system of the Summit II railing sets it apart from the competition. With a sturdy bracket and hidden screws, this adds a finishing touch to the Summit II railing system that is sure to appeal to the most discerning of eyes.

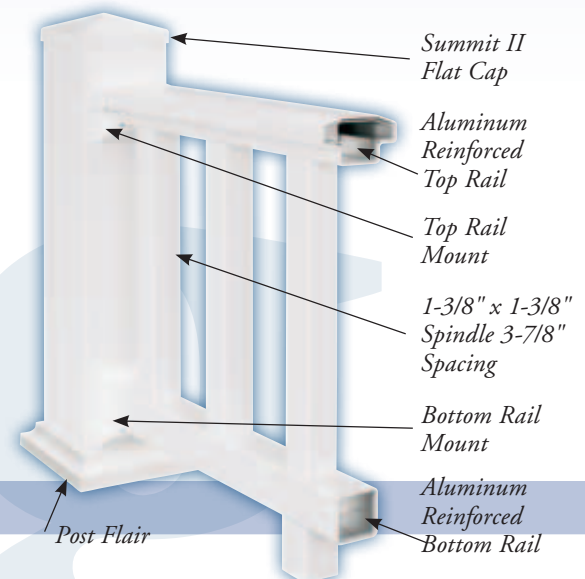


For a sculpted railing style, choose the Summit II series. The top rail has a unique design that compliments both pickets and spindles. Summit II railing meets IBC code requirements. Please ask for a copy of the test report.*

CCRR-0147
Complies with
IBC & IRC, FBC.*

Summit II Railing

- Heights: 36", 42"
- Widths: 48", 72", 96", 120"
- Stair Lengths: 48", 72", 96", 120"
- Top Rail: 3-1/4" x 1-3/4" Contoured Rail
- Bottom Rail: 1-3/4" x 1-3/4"
- Pickets/Spindles: 1-3/8" x 1-3/8"
- Optional 3/4" Round Aluminum Spindles
- Spacing: 3-7/8"
- Aluminum Insert: Top and Bottom Rails
- Standard Colors: White & Tan
- Optional Spindle Colors on page 3
- Testing: Approved for guardrail use up to and including 96" with standard spindles*





ICC-ES
ESR-1324
Complies with IBC & IRC*

Grandview II Railing

- Heights: 36", 42"
- Widths: 48", 60", 72", 84", 96", 108", 120"
- Stair Lengths: 48", 60", 72", 84", 96", 108", 120"
- Top Rail: 2-1/2" x 3-1/2" T-Rail
- Bottom Rail: 1-3/4" x 3-1/2" Rail
- Pickets/Spindles: 1-3/8" x 1-3/8"
- Optional 3/4" Round Aluminum Spindles
- Spacing: 3-1/2"
- Aluminum Insert: Top and Bottom Rails
- Standard Colors: White & Tan
- Optional Spindle Colors on page 3
- Options: Decorative Spindle 36"
Reinforced Decorative Spindle 42"
- Testing: Approved for guardrail use up to and including 96" with standard spindles*

Grandview II railing exudes a stately quality that demands attention. Whether you want railing for the front of your home or for the deck in your backyard, the Grandview II is a perfect choice.

Railing Systems

The Windjammer II railing adds both style and beauty to a home. Its classic curves offer a traditional appearance with a smooth finish that never requires painting. Choose your own look from our wide selection of railing designs to give your home a look that the neighbors will envy...from graceful spindles on a modern T-rail, to a crafted sculpted rail or traditional railing.

Windjammer II Railing

- Heights: 36", 42"
- Widths: 48", 60", 72", 84", 96", 108", 120"
- Stair Lengths: 48", 60", 72", 84", 96", 108", 120"
- Top Rail: 3-1/4" x 1-3/4" Contoured Rail
- Bottom Rail: 1-3/4" x 1-3/4"
- Pickets/Spindles: 1" x 1" (Reinforced Spindle 42")
- Spacing: 2-7/8"
- Aluminum Insert: Top and Bottom Rails
- Standard Colors: White & Tan
- Testing: Approved for guardrail use up to and including 84" with standard spindles*

ICC-ES
Legacy Report
NO. 21-42*



Railing



ICC-ES
ESR-1324
Complies with IBC & IRC*

Premier II Railing

- Heights: 36", 42"
- Widths: 48", 60", 72", 84", 96", 108", 120"
- Stair Lengths: 48", 60", 72", 84", 96", 108", 120"
- Top Rail: 3-1/4" x 1-3/4" Contoured Rail
- Bottom Rail: 1-3/4" x 1-3/4"
- Pickets/Spindles: 7/8" x 1-1/2"
- Optional 3/4" Round Aluminum Spindles
- Spacing: 2-7/8"
- Aluminum Insert: Top and Bottom Rails
- Standard Colors: White & Tan
- Optional Spindle Colors on page 3
- Options: Decorative Spindle 36" & 42"
- Testing: Approved for guardrail use up to and including 84" with standard spindles*

Premier II railing adds a simple style to any architectural design. From the graceful touch added to a front porch to the sleek and modern touch Premier II railing adds to the deck in the backyard, your home will be the envy of the neighborhood.

Systems

ICC-ES
Legacy Report
NO. 21-42*

Classic II Railing

- Heights: 36", 42"
- Widths: 48", 60", 72", 84", 96", 108", 120"
- Stair Lengths: 48", 60", 72", 84", 96", 108", 120"
- Top Rail: 1-3/4" x 3-1/2"
- Bottom Rail: 1-3/4" x 3-1/2"
- Pickets/Spindles: 7/8" x 1-1/2"
- Optional 3/4" Round Aluminum Spindles
- Spacing: 2-7/8"
- Aluminum Insert: Top & Bottom Rails
- Standard Colors: White & Tan
- Optional Spindle Colors on page 3
- Options: Decorative Spindle 36" & 42"
- Testing: Approved for guardrail use up to and including 96" with standard spindles*

The Classic II railing enhances your home's architectural appeal with clean lines and traditional appearance. This railing style adds beauty to any home or business. Plus, Classic II railing meets ICC Codes for Legacy Report 21-42.



Railing Options



Lansing Railing Systems provide both strength and beauty. From aluminum reinforced top and bottom rails to a wide variety of options from which to choose, you'll find a system that you will love. Select a decorative Porch Post or use our Post Wrap on existing posts. No matter which option of Signature Color you choose, you'll find a design to satisfy your individual taste.

Porch Posts

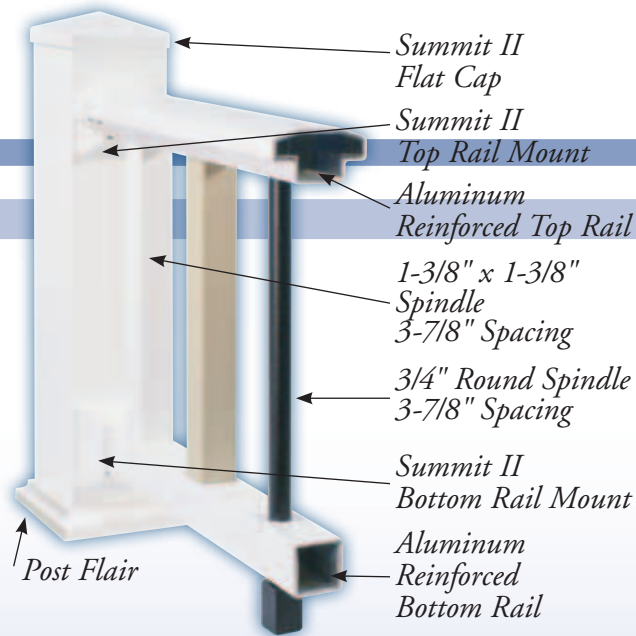
	Newel A-Series Decorative	Traditional A-Series Decorative	Traditional A-Series Decorative	Classic Post Sleeve	Classic Post Sleeve	Classic Support Post	Classic Post Sleeve
Size:	4"	4"	5"	4"	5"	5"	6"
Heights:	38"	108"	108"	38"	38"	96"	38"
	44"		120"	44"	44"	108"	44"
	48"			48"	48"	120"	48"
	54"			96"	54"		54"
				108"	96"		120"
				120"	108"		
					120"		

Colors: White & Tan

Post Wraps

4" & 6" Post Wrap is available in Smooth (standard) or Fluted (special order) in white and tan. The 8" is available in Fluted and white only. Complete the look with our four-piece adjustable trim.

4-Way Adjustable Aluminum Post Mount



- ❖ 550 lb. ICC Approved (HD) vs. 240 lb. (Std)
- ❖ Bolted Brackets (HD) vs. Welded (Std)
- ❖ Wall Thickness: .125" (HD) vs. .090" (Std)
- ❖ Different Fasteners Underneath
- ❖ Adjustable Plate Thickness: 1/2" (HD) vs. 3/8" (Std)
- ❖ Base Plates are Powder Coated to Protect Against Corrosion (HD & Std)



Private moments with the solitude that you deserve is exactly what you can expect with a Lansing privacy fencing system. Accent your privacy fence with a beautiful spindle top and add elegance to your environment at the same time.

Fencing

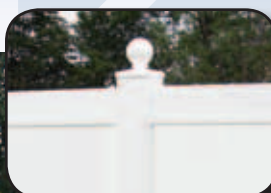


Interlock 2 Panel Privacy Tongue AND Groove - Green Series WITH FLAT CAPS

- Heights: 48", 60", 72", 84", 96"
- Width: 96" Centers
- 7° Rackable Panel Standard
- Post Size: 5" x 5" (.130") Vinyl Post Standard
- Flat Caps Standard (Ball & Gothic Optional)
- Side Channels for Posts Included
- Colors: White & Tan



- Interlocking Fastener
- Green Series Construction



Aluminum Reinforced Frame



Standard Gates

- Single Width: 36", 42", 48", 60"
- Double Widths: 72", 84", 96", 120"
- Aluminum Post Stiffeners: Gate Posts

Convex Gates

- Single Width: 48", 60"
- Double Widths: 96", 120"
- Aluminum Post Stiffeners: Gate Posts

Systems

Interlock 2 Panel Privacy Tongue AND Groove - Green Series WITH SPINDLE TOPPERS

- Heights: 60", 72", 84"
- Width: 96" Centers
- 7° Rackable Panel Standard
- Post Size: 5" x 5" (.130") Vinyl Post Standard
- Flat Caps Standard (Ball & Gothic Optional)
- Side Channels for Posts Included
- Colors: White & Tan



Standard Gates

- Single Width: 36", 42", 48", 60"
(60" width x 60" height)
- Double Widths: 72", 84", 96", 120"
- Aluminum Post Stiffeners: Gate Posts



- I-Beam Reinforcement Prevents Sagging
- 7° Rackable Panels

Our Recreational & Picket fence systems are a popular fence for homeowners across the country since semi-privacy fences let you enjoy your privacy without completely blocking your view. Recreational & Picket fences are an ideal accent for any pool, patio or landscape. The Lansing designs offer the same finished look on both sides so you and your neighbor will both be happy no matter what style you choose.

Fencing



Recreational II

- Heights: 36", 42", 50-1/2"
- Width: 96" Centers
- Post Size: 4"x4" (.135") Vinyl Posts
- Flat Caps Standard
- Spacing: 3-11/16"
- Aluminum Insert: Bottom Rail
- Colors: White & Tan

50-1/2" High Recreational Fencing Meets BOCA Requirements for Height & Spacing. For some areas, please check local code requirements before ordering.

Magna Latch



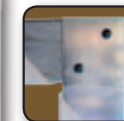
OR



Lokk Latch Deluxe



Aluminum Reinforced Frame



Tru-Close Hinge



Standard Gates

- Single Width: 36", 42", 48", 60", 72"
- Double Widths: 72", 96", 120", 144"
- Aluminum Post Stiffeners: Gate Posts
- Aluminum Reinforced Frame

Picket II

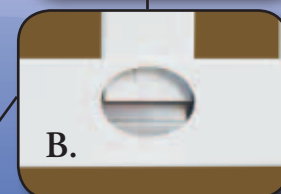
- Heights: 36", 42", 48"
- Width: 96" Centers
- Post Size: 4" x 4" (.135") Vinyl Posts
- Flat Caps Standard (Gothic Caps Optional)
- Spacing: 2-15/16"
- Aluminum Insert: Bottom Rail
- Colors: White & Tan
- Matching Gates Available



Hidden Screw
Top Rail Support
Center Picket



A.



B.

- A. Bottom Rail
h-Channel
Aluminum
Reinforcement
- B. Notched Pickets

Systems

Hardworking and affordable, a Lansing ranch fencing system is a great choice for a busy ranch or casual neighborhood. The clean lines of the ranch blend beautifully with a wide range of architectural styles. Whether you're looking to establish a property boundary or add charm to a country home, a ranch style fence provides traditional appearance while offering non-traditional maintenance.



Sculptured Picket II

- Heights: 36", 42", 48"
- Width: 96" Centers
- Post Size: 4" x 4" (.135") Vinyl Posts
- Flat Caps Standard (Gothic Caps Optional)
- Spacing: 2-15/16"
- Aluminum Insert: Bottom Rail
- Colors: White & Tan
- Matching Gates Available

Rail Ranch Fence II

- 2-Rail Height: 36"
- 3-Rail Height: 48", 52"
- 4-Rail Height: 52"
- Width: 96" Centers
- Post Size: 5" x 5" Vinyl Posts
- Flat Caps Standard (Gothic Caps Optional)
- Colors: White & Tan

2 Rail Ranch



3 Rail Ranch



4 Rail Ranch





All vinyl railing and fence systems come with a Lifetime Limited Warranty* which is transferable should you sell your home. External aluminum products and components are non-transferrable. Vinyl products are guaranteed never to rot, peel, blister, rust or be consumed by insects. If you are looking for quality products manufactured to last, ask your contractor for Lansing Building Products.

8501 Sanford Drive • Richmond, VA 23228 • (800) 868-8779

www.lansingbuildingproducts.com

Lansing Building Products reserves the right to delete or change items in its product line without notice.

*See warranty for full details © August 2011 Lansing Building Products



Lansing Railing Systems are expressly manufactured for Lansing Building Products by DSI. All warranties, expressed and implied are provided by DSI.

SP05/12 99681